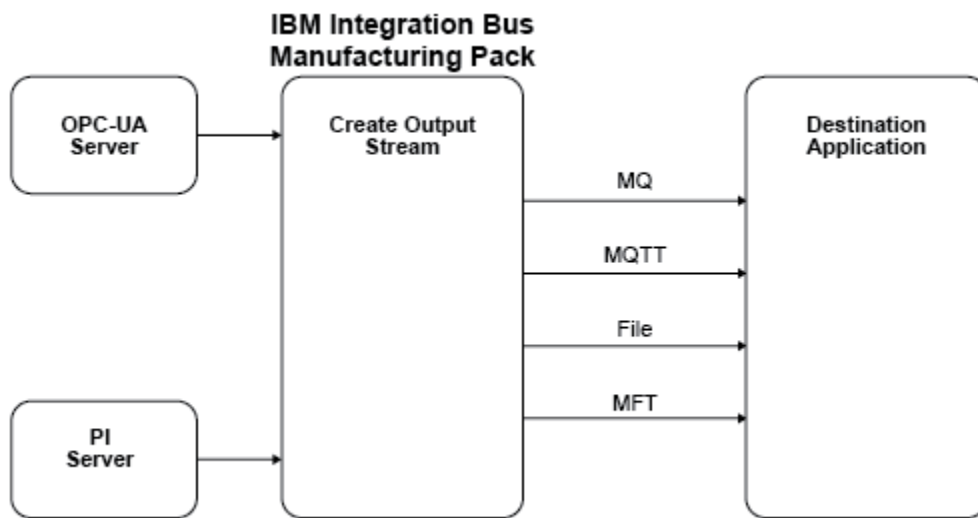




betaWorks

| | |
|---|-----------|
| 1.INTRODUCTION..... | 3 |
| 2.LAB ENVIRONMENT..... | 5 |
| 3.START THE OPC-UA SERVER..... | 6 |
| 4.GENERATE THE FACTORY PUBLICATION APPLICATION..... | 7 |
| 5.DEPLOY AND TEST THE FACTORY PUBLICATION APPLICATION..... | 15 |



MQTT output

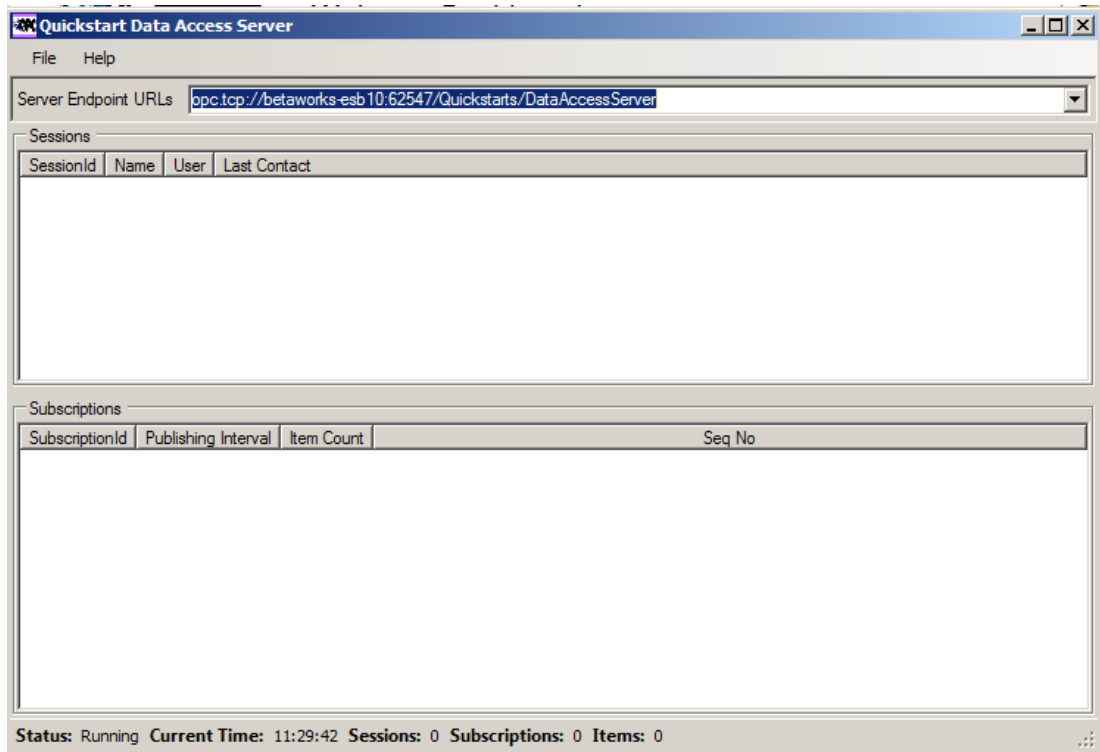
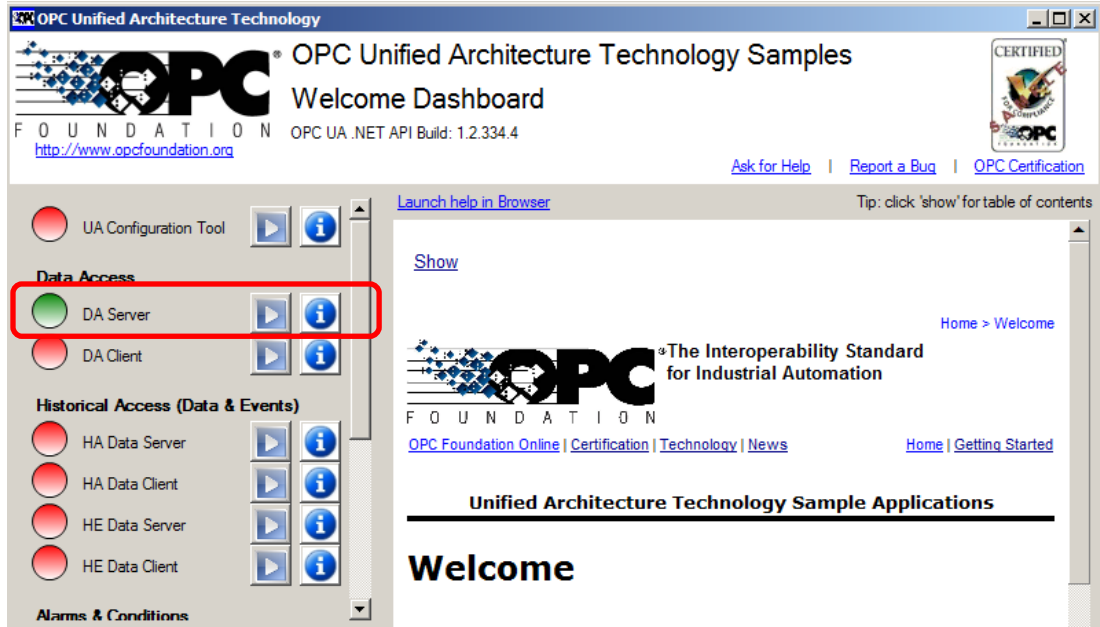
MQ output

File - Real-time output

File - Batched output

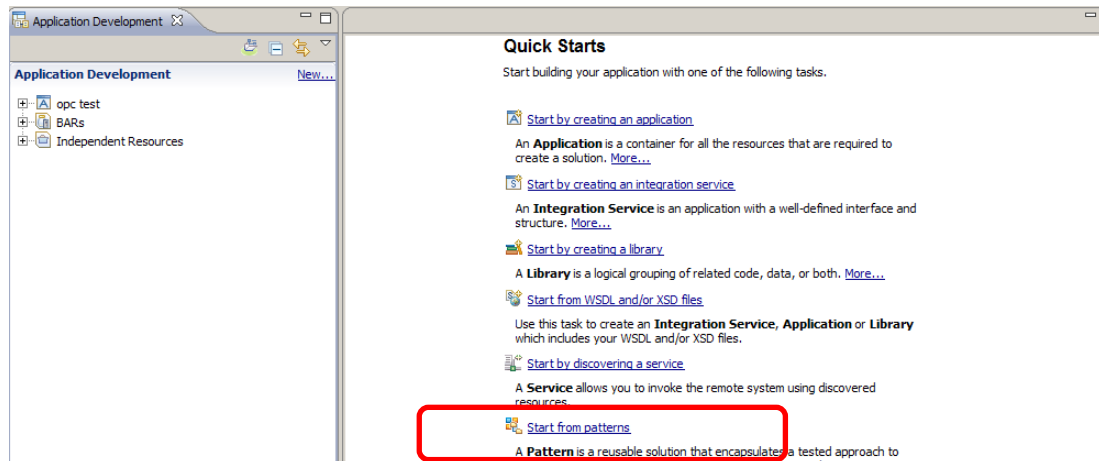
MFT - Real-time output

MFT - Batched output



Quick Starts

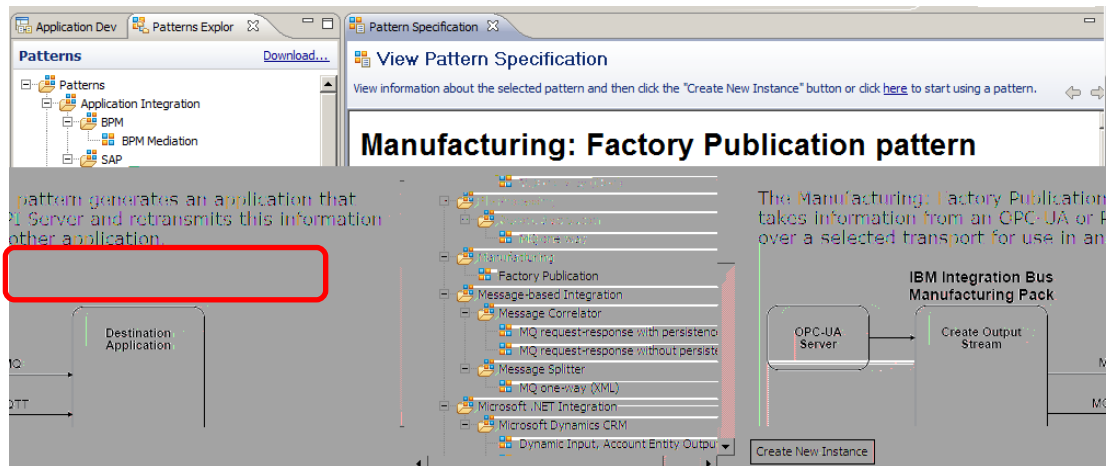
Start from patterns



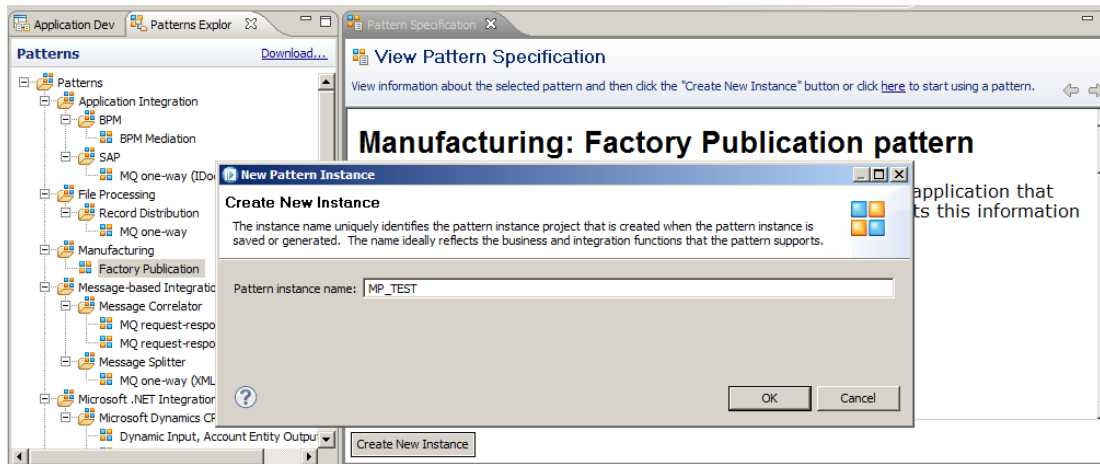
Factory Publication

Manufacturing

Create New Instance

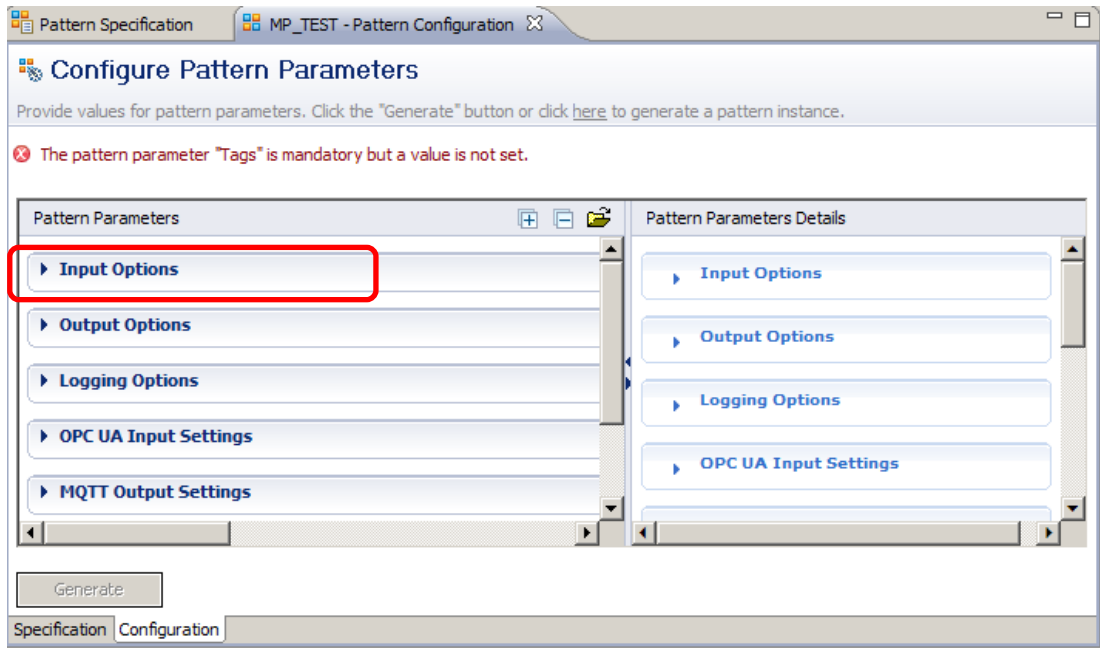


OK

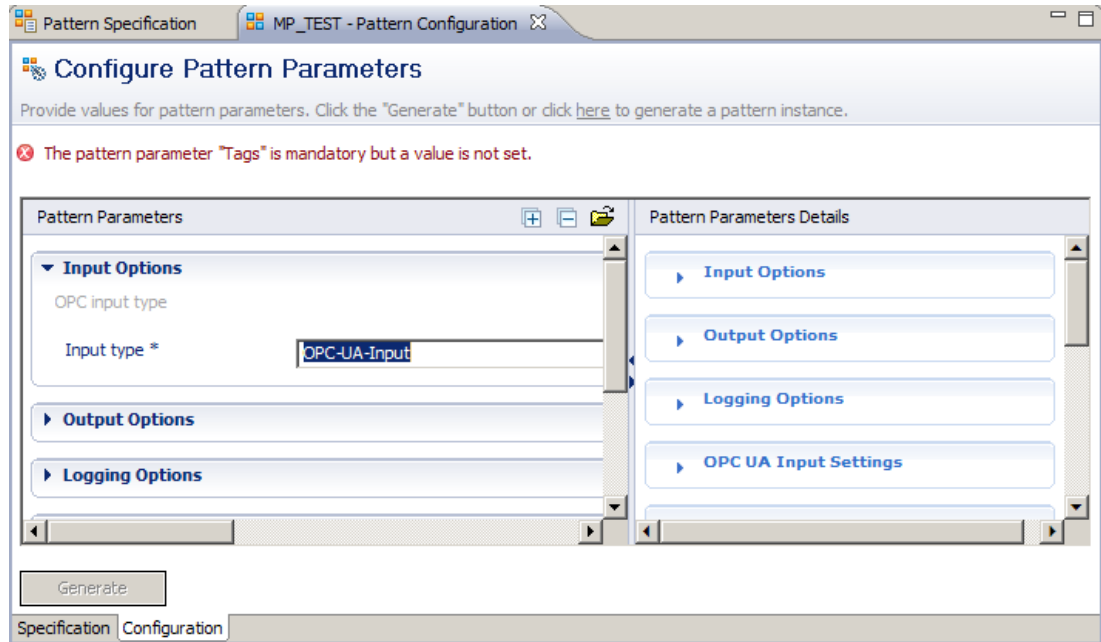


Configure Pattern Parameters

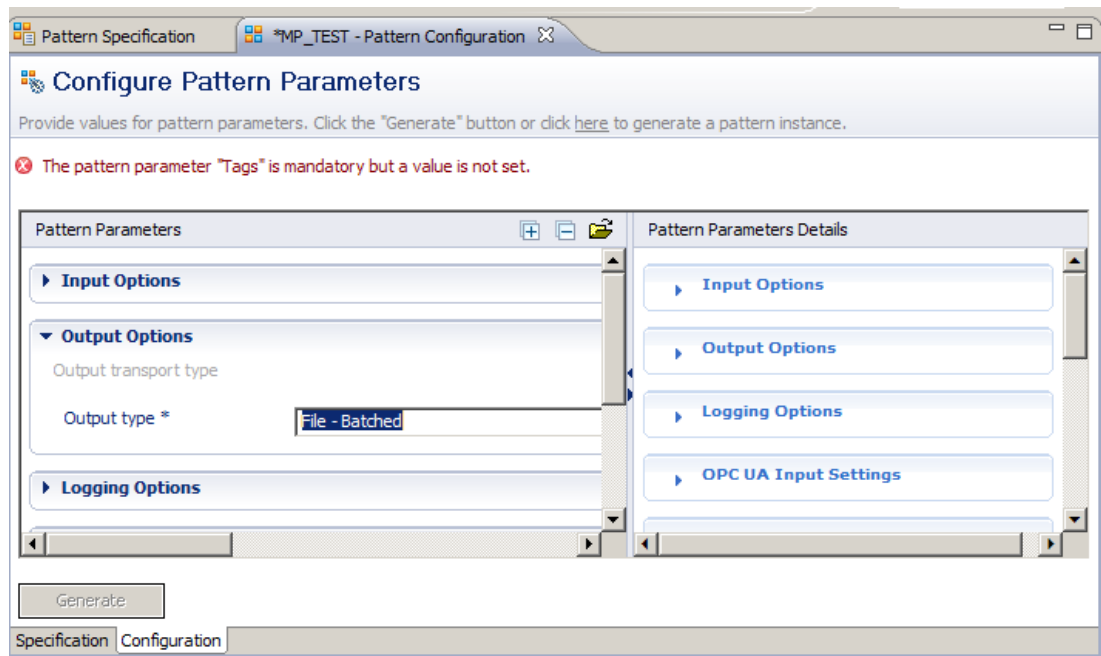
Input Options



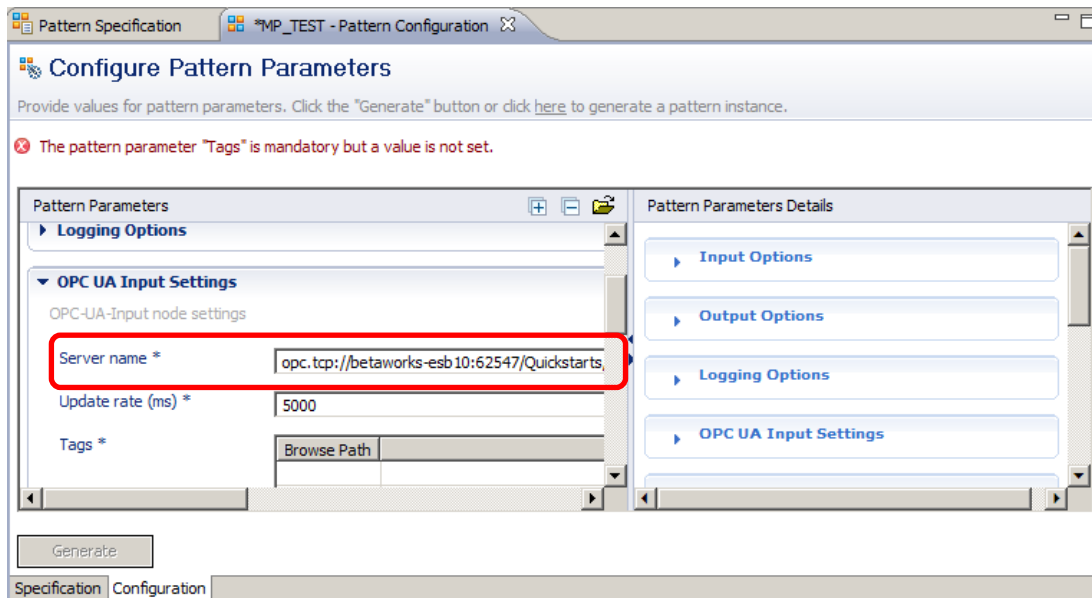
- OPC-UA-Input
- PI-Input



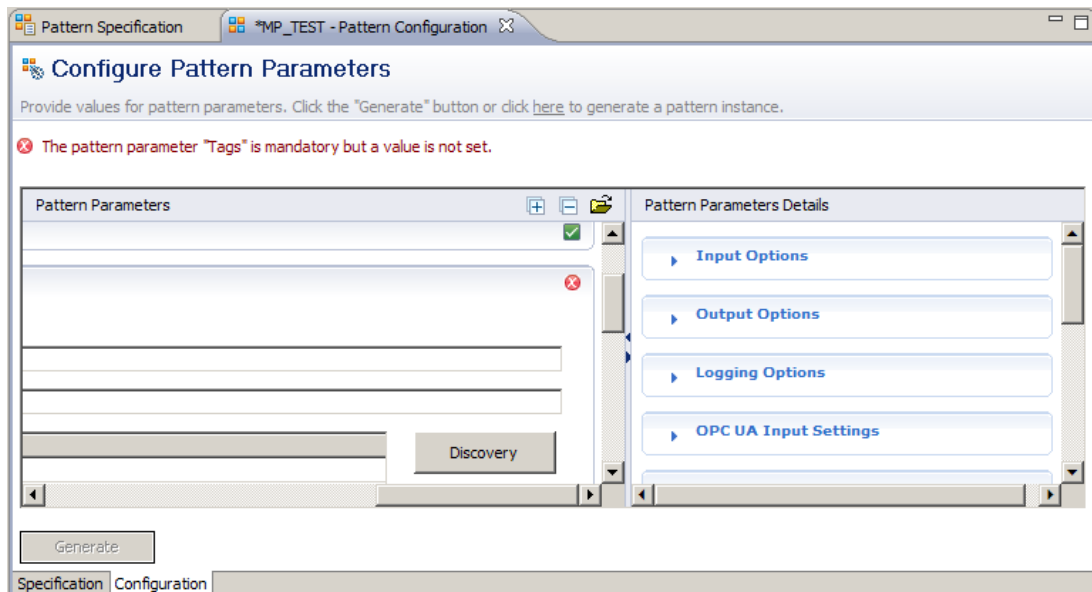
File – Batched



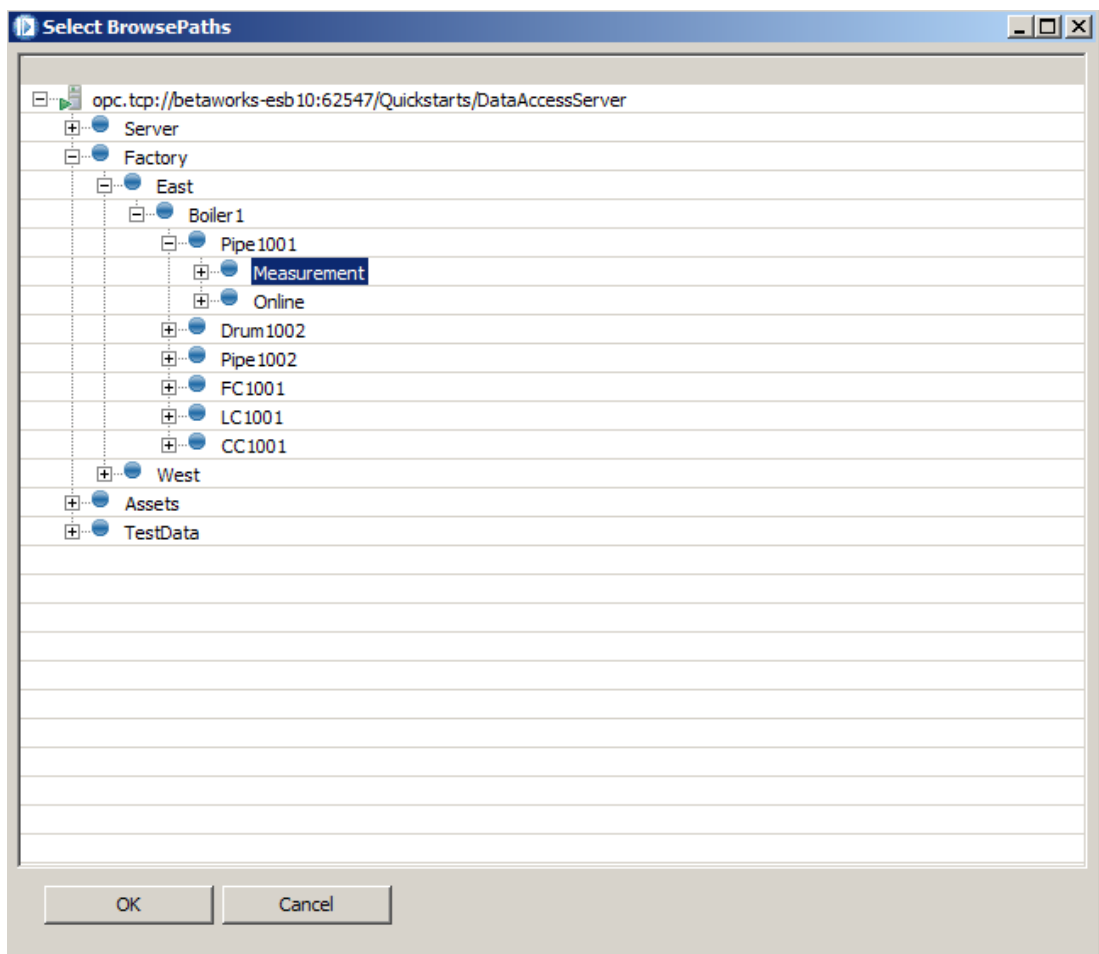
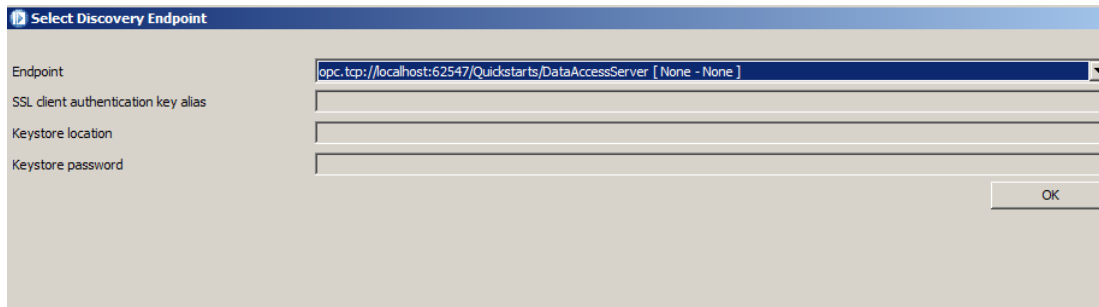
OPC UA Input Settings
Server name



Discovery

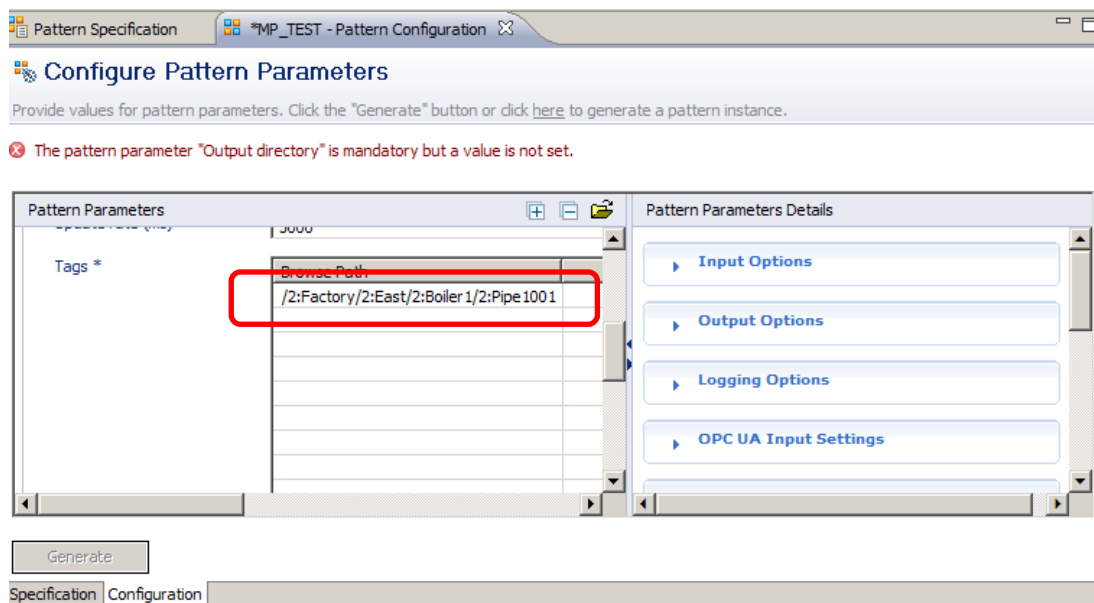


OK

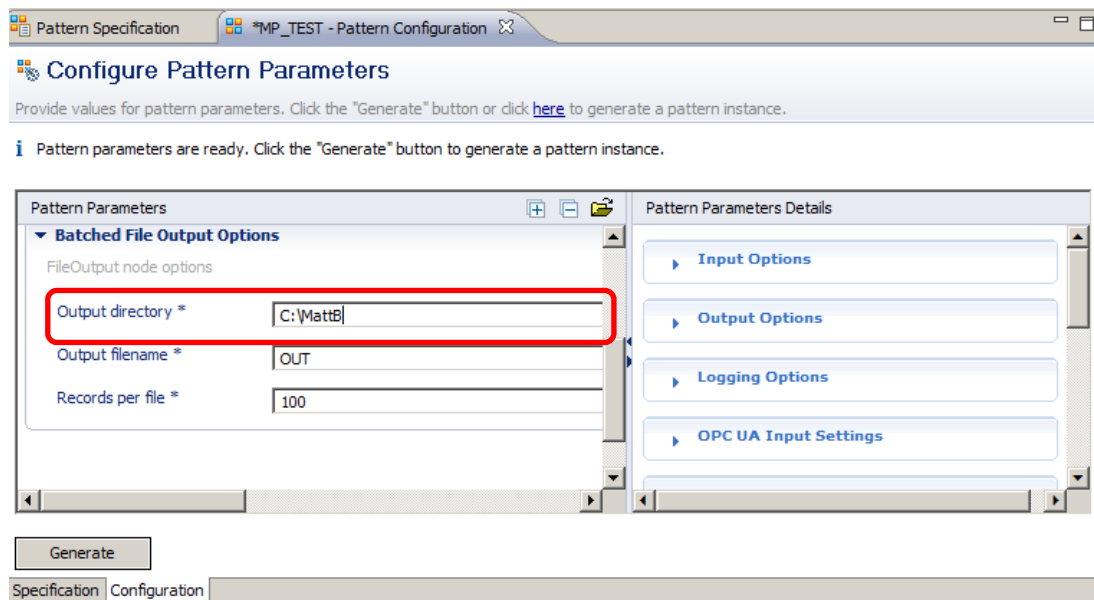


Browse Path

OPC UA Input Settings

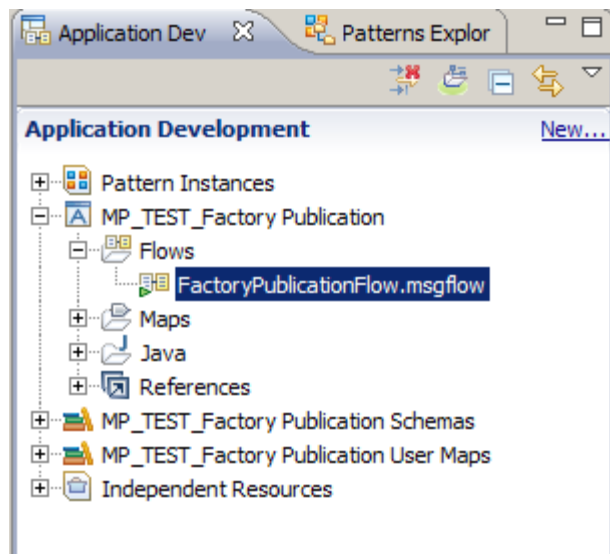
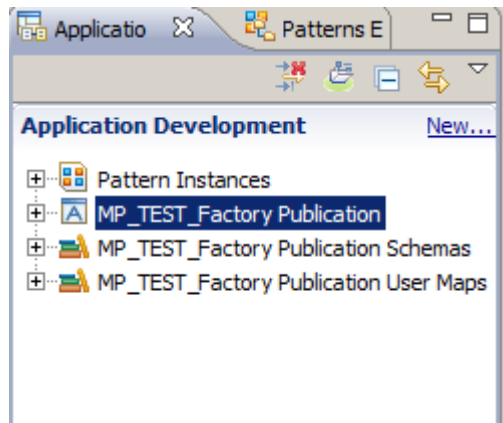


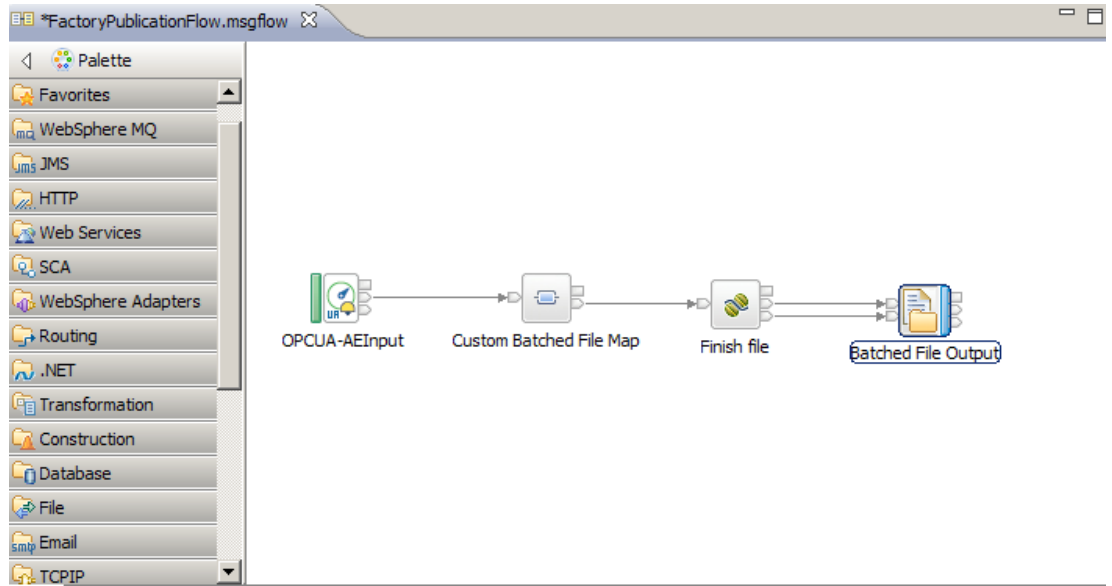
Batched File Output Options



Generate

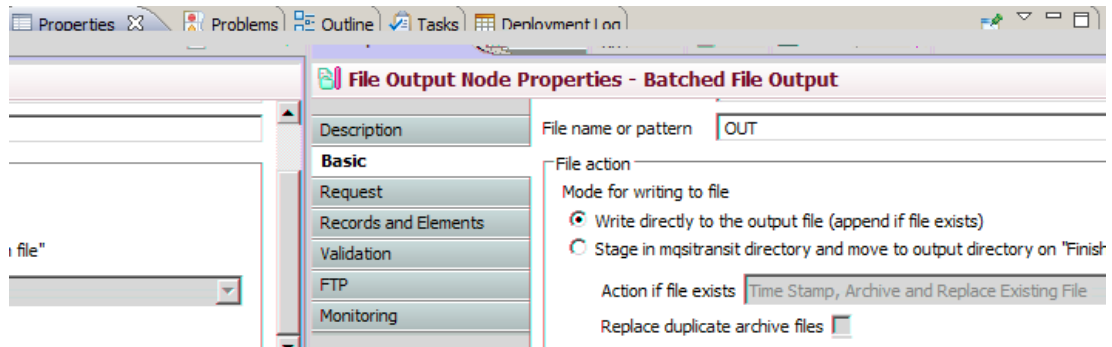
Application Development



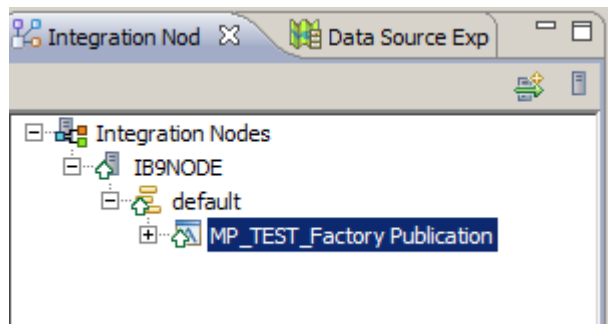
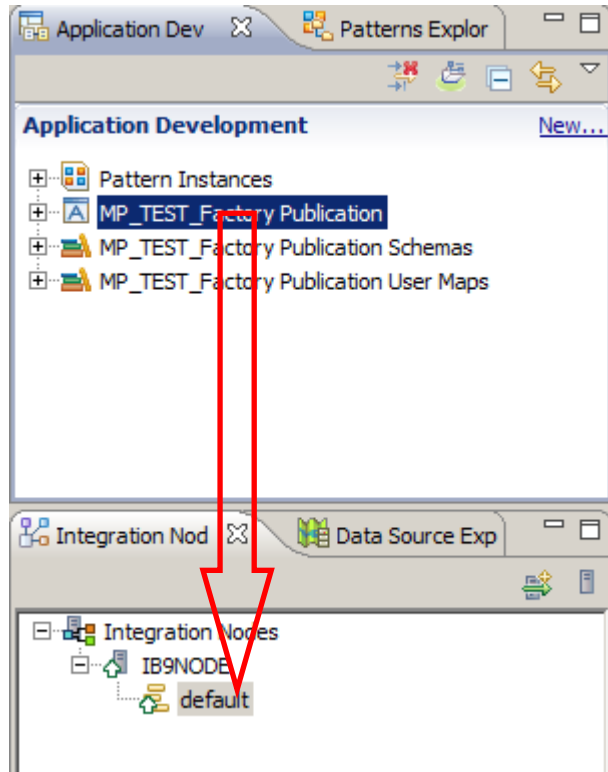


Mode for writing to file

Write directly.



control-s



wordpad

